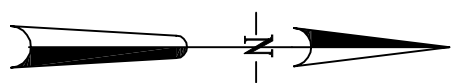


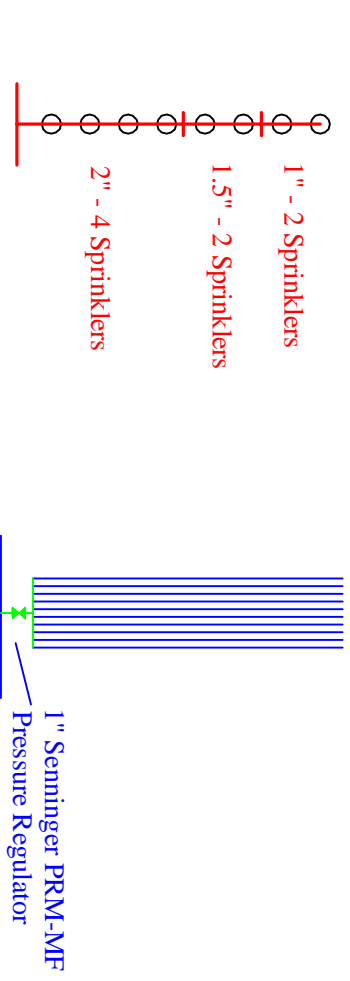
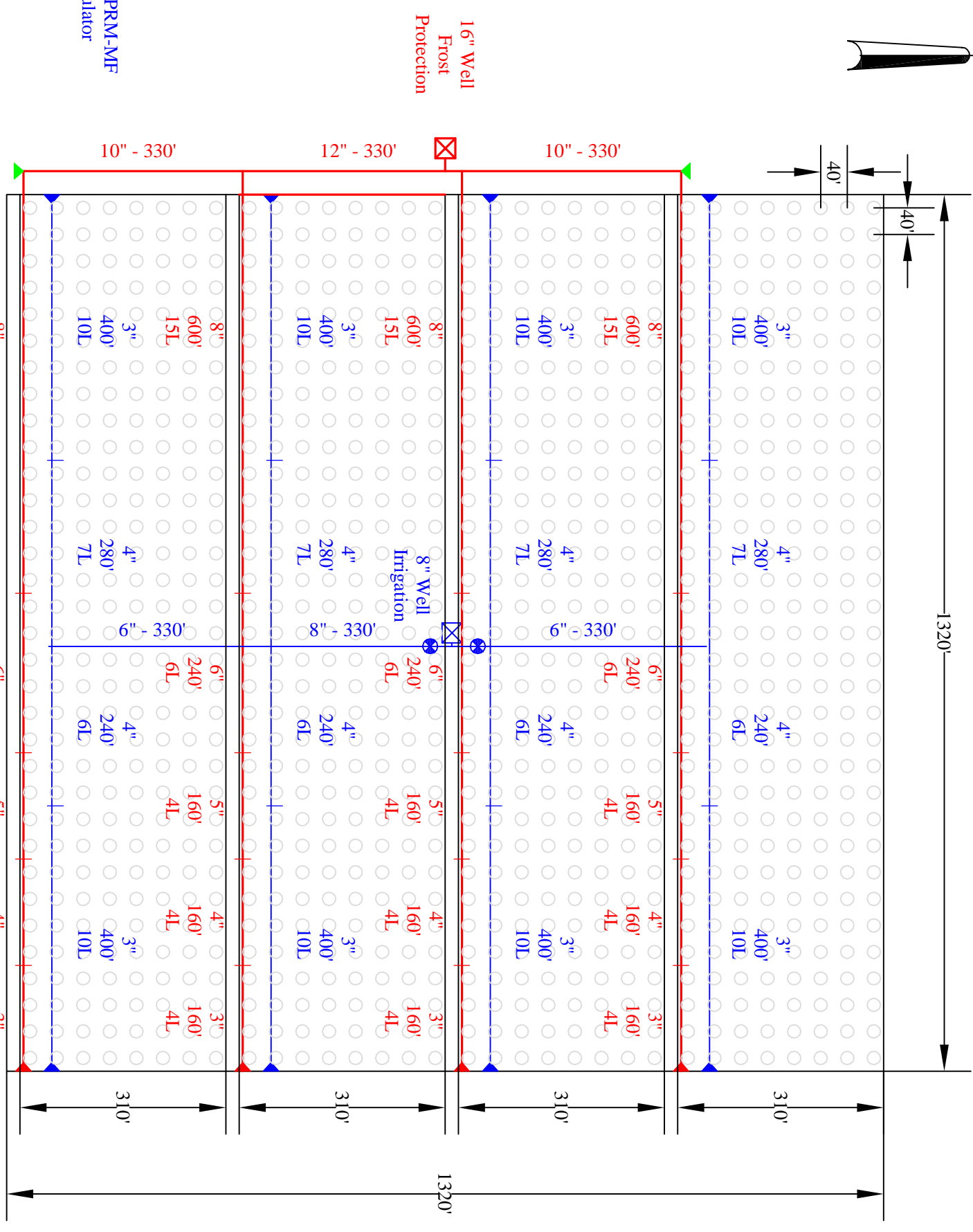
LEGEND

- 40 Net Acres
 - 4' Beds (North/South)
 - Drip Irrigation
 - 5/8" 8 mil Drip Tape
 - 12" Emitter Spacing (0.24 gph/emitter)
 - 0.40 gpm / 100'
 - Two Zone Operation
 - Frost Protection
 - Sprinkler: Nelson Rotator
 - K5-#16 Nozzle - 3.24 gpm, 37' radius @50 psi
 - 40' x 40' Spacing
 - 27 Sprinklers / Ac = 88 gpm / Ac
 - One Zone Operation
- PVC Pipe - Frost Irrigation
 - PVC Pipe - Frost Protection
 - Butterfly Valve
 - End Flush
 - 3" Tri-Action Valve
 - Irrigation Pump - 8" Well - 900 gpm
 - Frost Protection Pump - 16" Well - 3,450 gpm



Scale: 1" = 200'
 When plotted on 11x17 paper

Latitude = 27 deg 51 min 21.86 sec N
 Longitude = 82 deg 8 min 20.42 sec W



SHEET 1 of 1	DATE 24 Aug 2011	PROJECT <h2 style="margin: 0;">Strawberries</h2> FOR <h2 style="margin: 0;">Sewell and Sewell</h2>	 www.agservicesintl.com Phone: (866) 468-1177	REVISIONS	
	SCALE 1" = 200'			NO.	DATE
	DRAWN BY O.R.				
	APPROVED				