

LEGEND

72 Net Acres
Blueberries
2' x 9' Plant Spacing (North-South)
2,420 Plants / Acre

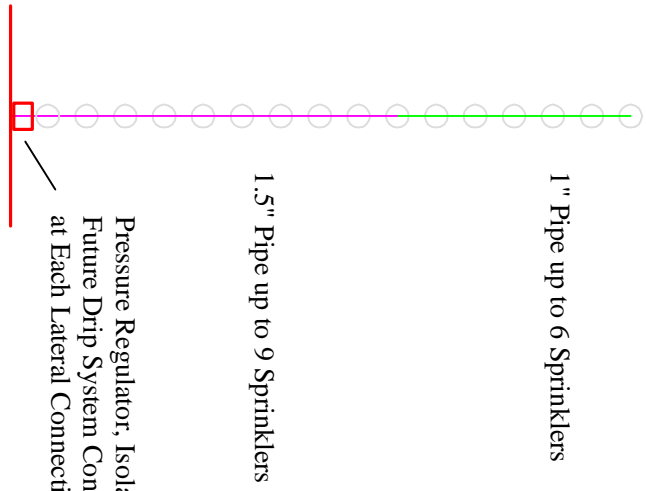
Drip Irrigation (Future)
Inline Drip Tubing 1 gph emitter @ 12" spacing
1.67 gpm / 100', 81 gpm/acre

Frost Protection
Seminger Wobbler #8 Nozzle
2.0 gpm, 23' radius @20 psi
27' x 27' Sprinkler Spacing
CU = 79%, DU = 74%, SC = 1.45
(No-Wind Condition)
120 gpm / acre

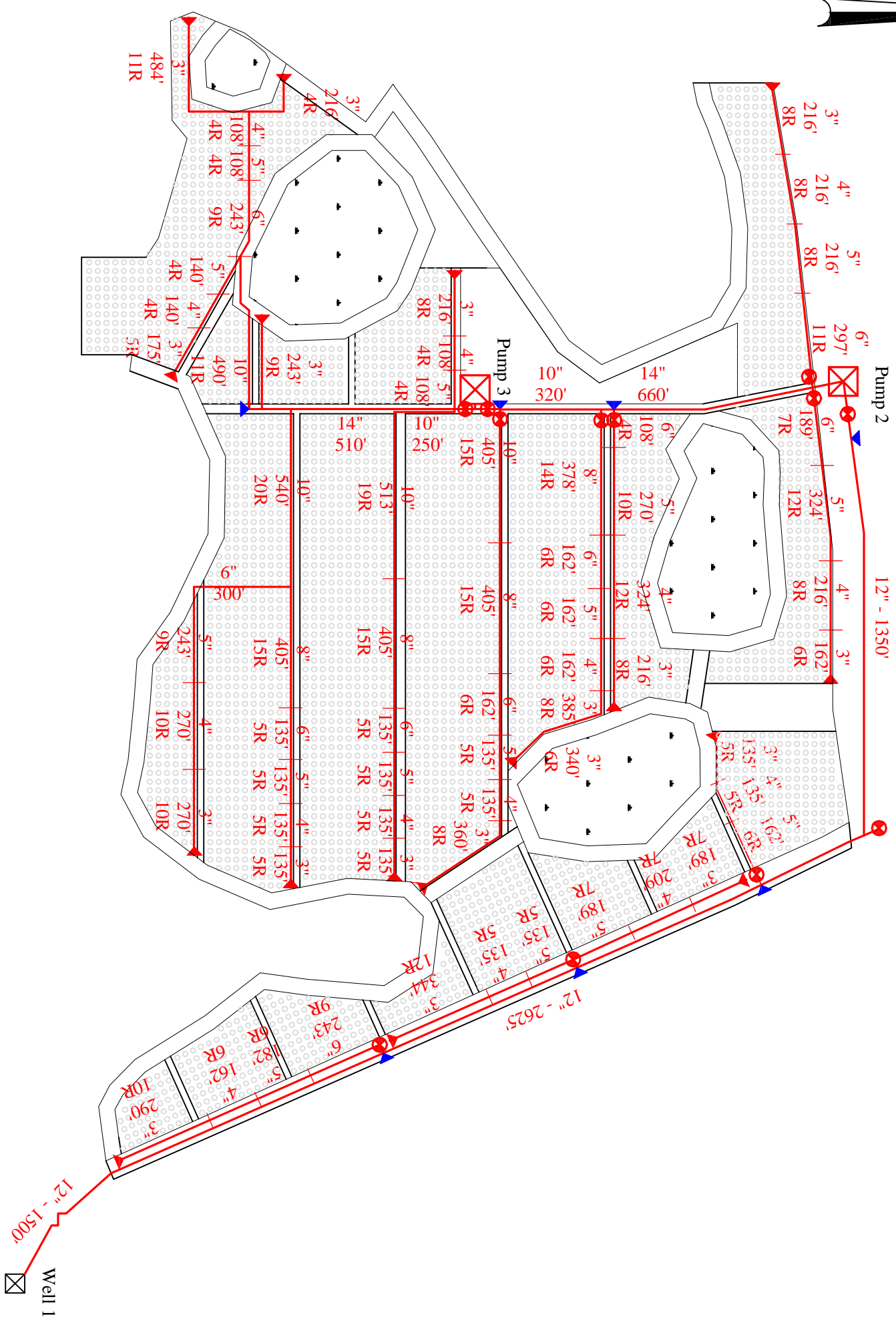
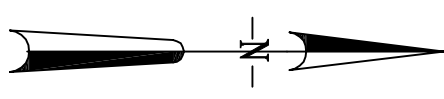
- PVC Pipe
- 1" PVC Lateral Pipe
- 1.5" PVC Lateral Pipe
- Butterfly Valve
- ▲ 3" Tri-Action Valve
- ▲ End Flush

- ⊠ Well 1 - 1560 gpm
- ⊠ Pump 2 - 3210 gpm
- ⊠ Pump 3 - 3850 gpm
- One Zone Operation

Lateral Pipe Layout (Typ)



Scale: 1" = 400'
When plotted on 11x17 paper



SHEET 1 of 1	DATE 4 Aug 2011	PROJECT Blueberries FOR Starkey Ranch	Agri Services international		REVISIONS	
	SCALE 1" = 400'		www.agservicesintl.com Phone: (866) 468-1177		NO.	DATE
	DRAWN BY <i>O.R.</i>				1.	14 Aug 2011
	APPROVED				2.	23 Aug 2011
			3.	31 Aug 2011		